

**DRAWING INDEX**

- SA-0.1 OVERALL SITE PLAN
- SA-1.1 FLOOR PLAN - MAJOR 2
- SA-1.2 FLOOR PLAN - MINOR 1
- SA-2.1 EXTERIOR ELEVATIONS - MAJOR 2 & MINOR 1
- SA-3.1 BUILDING SECTIONS - MAJOR 2 & MINOR 1

**PROJECT DATA**

ACCESSOR'S PARCEL No:	481-260-001-000, 481-260-026-000, 481-260-029-000	
ZONING:	CC, PARCELS CO-21, CO-31, CO-41	
GENERAL PLAN:	CC, PARCELS CO-21, CO-31, CO-41	
OVERALL PARCEL AREA:	+/- 23.5 AC TOTAL	
GROSS FLOOR AREA:	<b>APPROVED SF</b>	<b>NEW SF</b>
MAJOR 2:	32,314 SQ.FT.	38,300 SQ.FT.
MINOR 1:	8,998 SQ.FT.	6,200 SQ.FT.
NUGGET MARKET:	40,000 SQ.FT.	NO CHANGE
SHOPS 1:	10,000 SQ.FT.	10,200 SQ.FT.
PAD 2:	7,200 SQ.FT.	7,450 SQ.FT.
QSR 2:	4,600 SQ.FT.	4,800 SQ.FT.
QSR 1:	2,400 SQ.FT.	2,450 SQ.FT.
PAD 1:	7,000 SQ.FT.	7,200 SQ.FT.

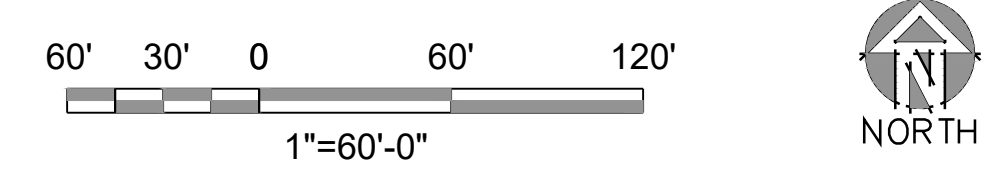
**NOTE:**  
NEW SQUARE FOOTAGE INCLUDES LEASABLE AREA PLUS FIRE CONTROL ROOM AND ELECTRICAL ROOM AT EACH BUILDING.

**DEVELOPER / CONSULTANT INDEX**

**DEVELOPER**  
ARMSTRONG CO ROSEVILLE, LLC  
2400 DEL PASO ROAD, SUITE 140  
SACRAMENTO, CA 95834  
REID LEWIS  
(916) 643 - 9610  
RLEWIS@AGOC.COM

**ARCHITECT**  
BORGES ARCHITECTURAL GROUP  
1478 STONE POINT DR., STE. 350  
ROSEVILLE, CA 95661  
KARENDA MACDONALD  
(916) 782-7200  
KARENDA@BORGESARCH.COM

- KEYNOTES**
- ① PARK AND RIDE PARKING SPACE
  - ② ACCESSIBLE PARK AND RIDE PARKING SPACE
  - ③ OUTLINE OF 20'-0" EASEMENT FOR BUS STOP
  - ④ LOCATION OF TIE-IN TO ELECTRICAL SERVICE
  - ⑤ LOT LINE



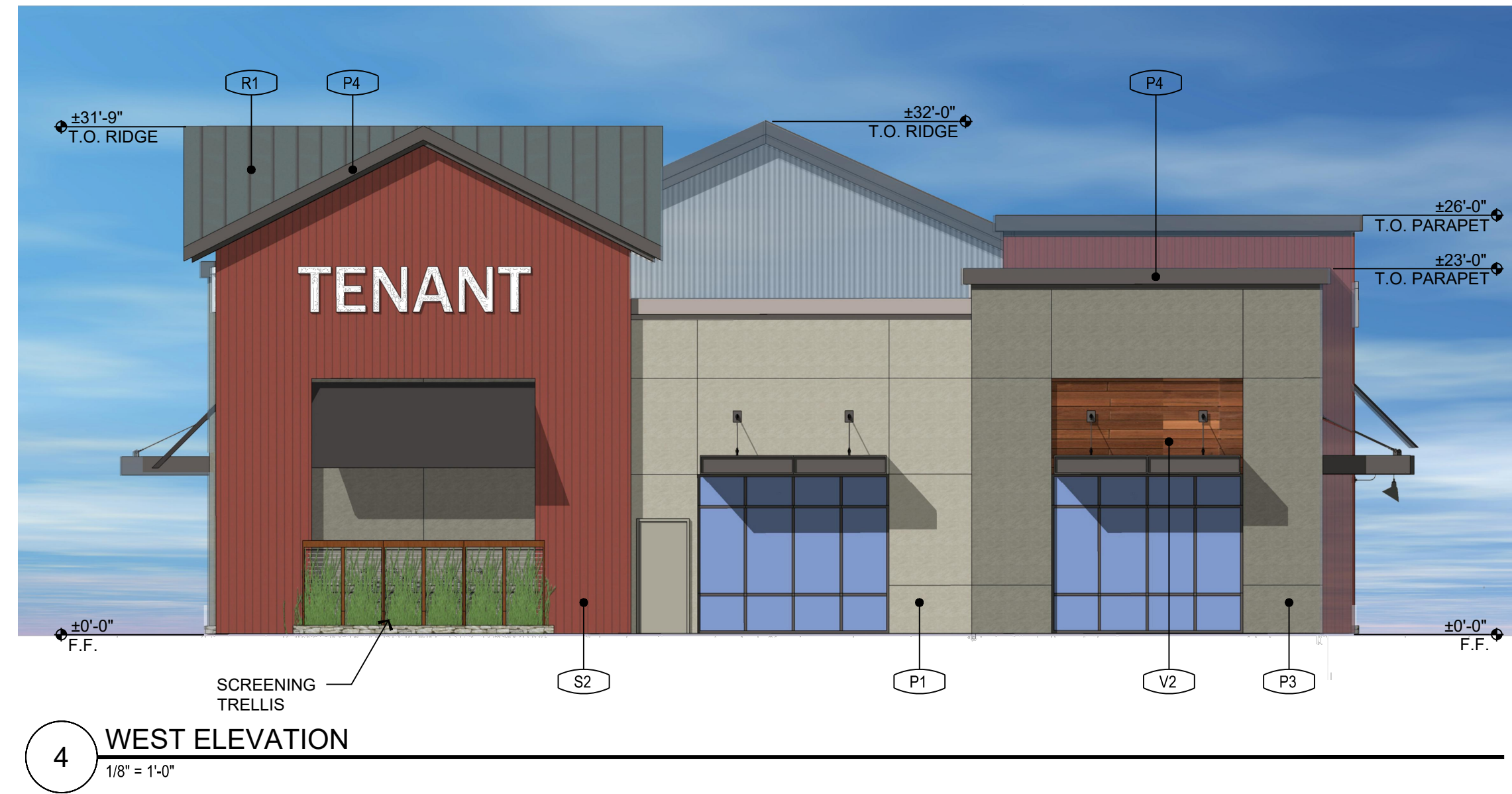
# CAMPUS OAKS TOWN CENTER OVERALL SITE PLAN

1533 BLUE OAKS BOULEVARD, ROSEVILLE, CA

19036 4/3/2020

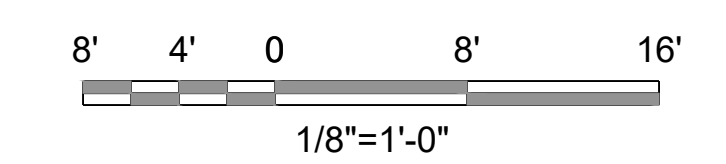
1478 STONE POINT DRIVE SUITE 350 ROSEVILLE, CA 95661 T | 916 782 7200 borgesarch.com





MATERIAL LEGEND

								
P1 DUNN EDWARDS "WHISPER" DEW340	P2 DUNN EDWARDS "EGYPTIAN SAND" DE6207	P3 DUNN EDWARDS "WELLS GRAY" DE6242	P4 DUNN EDWARDS "BLACK RUSSIAN" DE6391	V2 EMSER TILE "ALPINE CAFE"	S1 METAL SALES CORRUGATED "GALVALUME"	S2 METAL SALES SOFFIT PANEL "COLONIAL RED"	A1 SUMBRELLA "SLATE" 4684	R1 METAL SALES "OLD ZINC GREY" W29



CAMPUS OAKS TOWN CENTER PAD 1 PAD1 EXTERIOR ELEVATIONS



4 NORTH ELEVATION 1/4" = 1'-0"  
 3 SOUTH ELEVATION 1/4" = 1'-0"

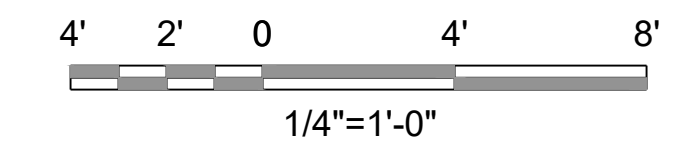


2 WEST ELEVATION 1/4" = 1'-0"



1 EAST ELEVATIONS 1/4" = 1'-0"

- Metal Siding  
Color: METAL SALES  
Colonial Red
- Steel Painted Canopies  
Color: Sherwin Williams  
Luau Green SW 6712
- Metal Roof Edge  
Color: Sherwin Williams  
Java SW 6090
- Stucco  
Color: Sherwin Williams  
Modern Gray SW 7632
- Wood Siding  
Emser Tile:  
Color: Alpine Cafe
- Aluminum Storefront  
Bronze



CAMPUS OAKS TOWN CENTER QSR-1 DEL TACO EXTERIOR ELEVATIONS

SA-1.2

